



VM400

The VM400 is the latest development in True 3D measurement technology. Integration of a color camera with a larger Field of View (FOV), while still retaining .07 mil resolution, allows operators to measure everything from 0201's and micro-BGA's to your largest applications. With its Windows® XP interface, the VM400 is easy to learn and use, making it an exceptional value for the SMT manufacturer concerned with improving printing and production yields.



VM400

(Shown with optional X-Y manual stage)

System Features

- Windows® XP user interface
- Color Image for easy Operator use
- Accurate & repeatable measurements regardless of substrate color and reflectivity
- Automatic calculation of height, area, width and volume measurements
- One-year, end-user warranty including technical support.

System Includes

- Anti-static work surface
- 2.8+ GHz CPU and SVGA monitor
- Hardware/software reference manuals

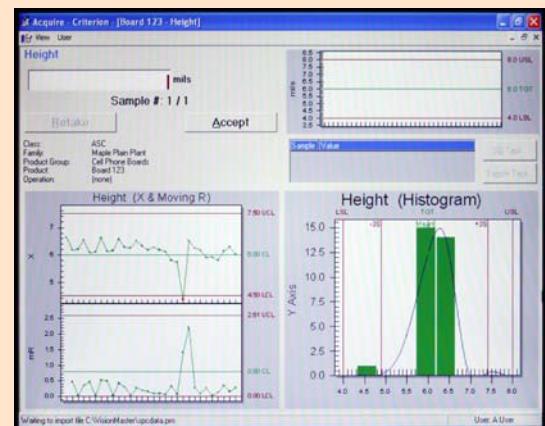
Options

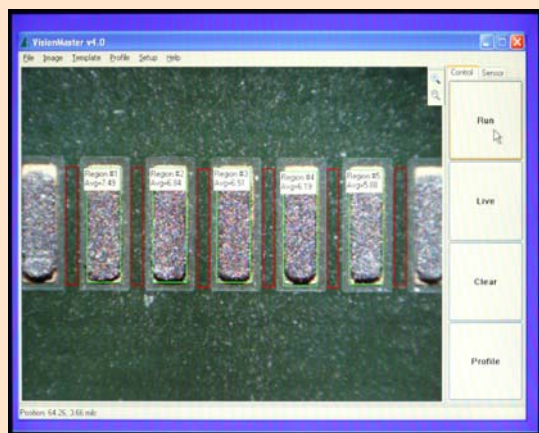
- Siemens® SPC Software (LAN Ready)
- NIST Traceable Standard
- Extended Warranty
- Manual X-Y Stage(shown)

SPC Software (Optional)

The optional Siemens® Systems SPC software is a powerful tool that helps operators control the critical stencil printing process. Data collected by the VM400 is instantly analyzed by the Criterion Software. Calculations crucial to understanding printing performance are reported, including:

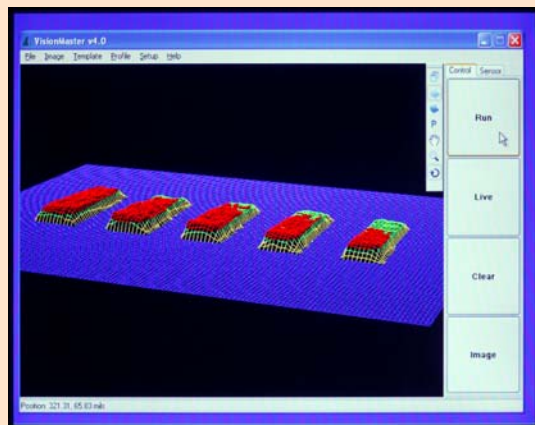
- X and Moving Range
- X-Bar and Sigma
- X-Bar and Range
- Histograms
- P Chart, np chart, c chart and u chart
- Pareto, weighted pareto for defects and corrective actions
- Variance and standard deviation
- Skewness, kurtosis and chi-squared for goodness of fit
- Min., max. and median values
- Cr, Cp, Cpk and lower Z values





Automated Measurements

To obtain measurements on the VM400, position the circuit board under the system's sensor to the desired location. Use manual, semi-automatic or full automatic mode to measure one of seven solder paste characteristics.



3D Color Profile Analysis

The VM400 allows operators to obtain 3D color profiles for fast and accurate paste analysis. Operators may use these profiles to help them determine what corrections need to be made to their solder paste printing process, thereby reducing down time.

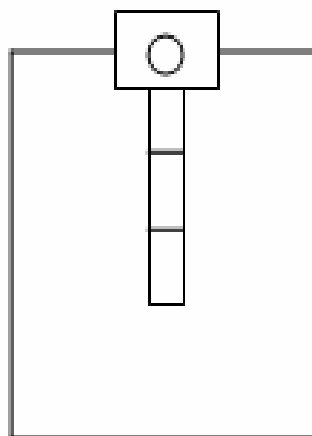
System Specifications

- **Maximum Object Thickness** 3.8 cm (1.5")
- **Standard work Surface (W*L)** 61 cm x 46 cm (24" x 18")
- **Throat depth** (sensor to support) 41 cm (16")
- **System Computer** 2.8 GHz – 512 MB RAM
- **Electrical Requirements** 120 OR 240 VAC, 50-60 Hz, 2A
- **Ambient Operating Temperature** +15° - +28° C (+60° to 82° F)
- **Ambient Operating Humidity** <90% non-condensing
- **System Weight*** (crated) 80 Kg (175 lbs)
- **System Weight*** (un-crated) 36 Kg (80 lbs)

*not including system pc and monitor

Sensor Specifications

- **Measurement Range** 416 µm (16.4 mils)
- **Resolution** 1.78 µm (0.07mil)
- **Integral Video Camera** CMOS Camera
- **Standard Field of View (FOV)** 8.1 mm x 6.1 mm
319 mils x 240 mils
- **Illumination** Halogen-based white light



- Overall Length: 27" (68.58cm)
- Base Length: 24" (61cm)
- Width: 18" (45.72cm)
- Height: 19" (48.26cm)



For More Information:

ASC International
1799 County Road 90, Suite 9
Maple Plain, MN 55359 U.S.A.

- Tel: USA 763-479-6210
- Fax: USA 763-478-6206
- E-mail: info@ascinternational.com
- Web: www.ascinternational.com
- Toll Free: 1-888-478-2912 (USA Only)

